



# CHAPTER 81

## SKY WRITER

December 2010 Newsletter

### **Notice!**

**EAA81 Chapter Dinner at El Corral  
Wednesday, 8 Dec, at 6 pm  
(By Advance Reservation)**

**(Note: No December Chapter Meeting)**

### **2010 EAA 81 Dues Payment Status**

Annual dues are \$20. As of 05 Dec, 97 of 107 regular members are paid-up. Checks should be made payable to: EAA Chapter 81 and sent to Mick Myal, 2900 E. Weymouth, Tucson, AZ 85716, or brought to a chapter meeting.

**Paul, thanks for having paid your dues through  
12/2010.**

### **Holiday Dinner**

There will be no regular meeting in December. However, we will be getting together for a Holiday Dinner at El Corral on River near Campbell on December 8<sup>th</sup> at 6 PM. Enough reservations have been received for the event and we look forward to seeing all of you there.

The next Chapter meeting will be a regular meeting in January at Ryan Field on the 15<sup>th</sup> at 10 AM.

### **Useful Information**

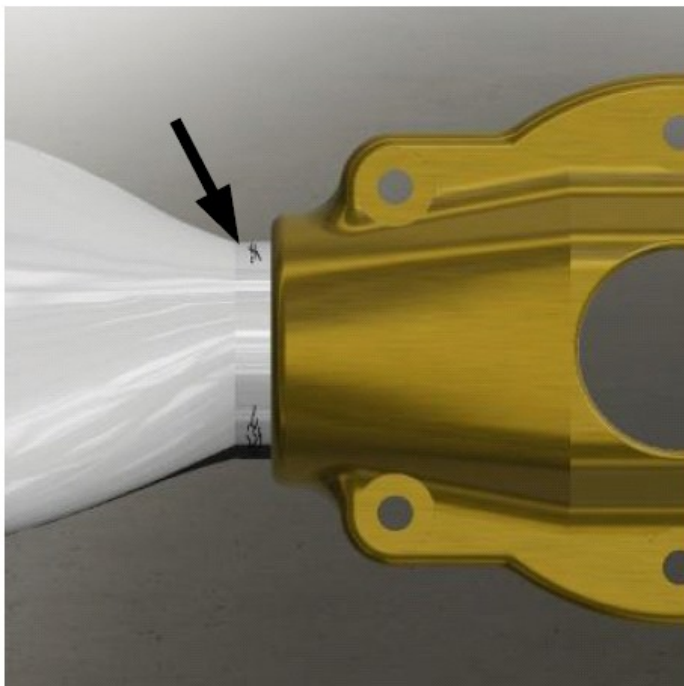
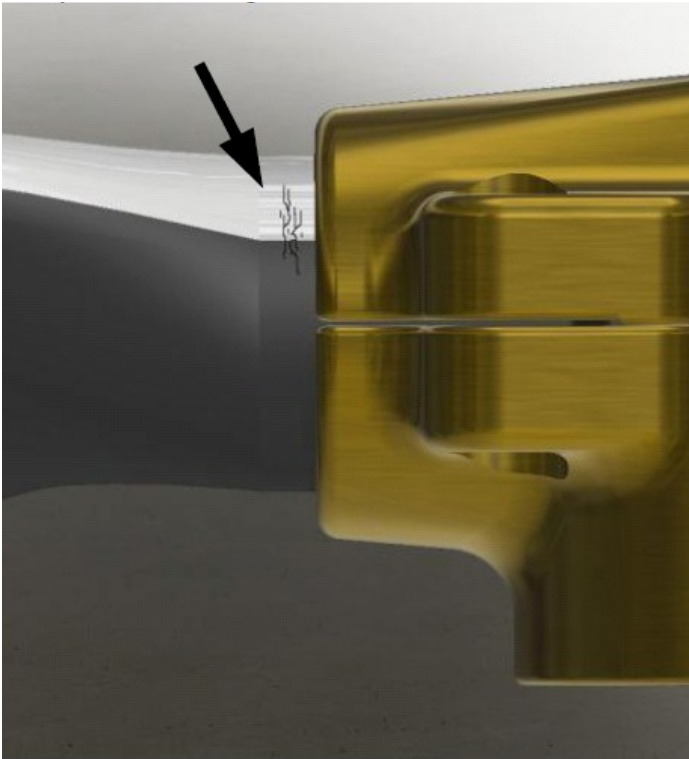
#### **Sensenich Composite Propeller Service Bulletin**

Sensenich has published a service bulletin (SB 10-07-21) for its composite propeller utilized on the Jabiru. For details, click on or load the following link. It can be found on their website under support, documents, service bulletins. Only Jabiru installations are affected.

[http://www.sensenich.com/files/documents/Service\\_Bulletins\\_Composite\\_Jabiru\\_Blade\\_Service\\_Bulletin\\_SB-10-07-21\\_1279986506.pdf](http://www.sensenich.com/files/documents/Service_Bulletins_Composite_Jabiru_Blade_Service_Bulletin_SB-10-07-21_1279986506.pdf)

According to the bulletin, "Sensenich has received reports of paint cracks on the shanks of Jabiru composite propeller blades. Cracks have been found on the leading and trailing edge portions of the shank, where the blade shank exits the hub and transitions into the blade airfoil. Cracks examined to date have not progressed deeper than the outer composite ply, but the crack location warrants regular preflight inspection to detect possible crack formation and propagation. .... Inspect blade shanks prior to each flight. Run your fingers around the root where the blade exits the metal hub, and check for loose fibers, cracks, or rough areas. Notify Sensenich of any occurrences and return for evaluation.

The following photos are extracted from the service bulletin, showing the cracks in the outer ply of the composite covering of the blade.



**Happy Holidays**  
**Best Wishes for the New Year**

That's all for now.

Please send items of interest, classifieds,  
(<mailto:newsletter81@eaa81.org>)  
or to Erik's address on front page.  
**Erik Fjerstad, Newsletter Editor**

---

**Check out the Chapter Website at**  
**<http://WWW.EAA81.ORG/>**

**Chapter Officers & Staff**

Duane Boyd, President (931) 472-4700  
<mailto:citationpilot60@hotmail.com>  
Hal Burlingame, Vice Pres. (520) 977-8600  
<mailto:eaa81@theriver.com>  
Bob Miller, Secretary (520) 322-0677  
<mailto:rmiller88@msn.com>  
Mick Myal, Treasurer (520) 881-2232  
<mailto:mick22@cox.net>  
Bruce Noon, Webmaster (520) 760-5925  
<mailto:Webmaster81@eaa81.org>  
Joe Sielbold, Director (520) 818-0603  
<mailto:seiboldj@aol.com>  
Stan Gorman, Director (520) 886-6533  
<mailto:smcgreevy@msn.com>  
Erik Fjerstad, Newsletter (520) 578-2005  
<mailto:newsletter81@eaa81.org>

**Tech Counselors:**

Gil Alexander (520) 544-8191  
<mailto:gilalex@q.com>  
Eldon Helmer (520) 665-9341  
<mailto:mirage@copper.net>  
Norm Radtke (920) 921-5125  
Chuck Valade (520) 579-6235  
<mailto:bd4flyer@netzero.net>

